

# 2021-2022 TCSOS COVID SAFETY PLAN



## Contact Information

Tuolumne County Superintendent of Schools  
175 Fairview Lane  
Sonora, CA 95370  
(209) 536-2000  
info@tcsos.us

## COVID Response Team

Cathy Parker, County Superintendent – [cparker@tcsos.us](mailto:cparker@tcsos.us) (209)536-2010  
Tracy Rasmussen – Executive HR Director – [trasmussen@tcsos.us](mailto:trasmussen@tcsos.us) (209)536-2011  
Stacy Wheat, Executive Special Education/SELPA Director – [swheat@tcsos.us](mailto:swheat@tcsos.us)  
Kendra Eccles, School Nurse, [keccles@tcsos.us](mailto:keccles@tcsos.us)  
Abigail Smith, School Nurse, [asmith@tcsos.us](mailto:asmith@tcsos.us)

This document has been created in compliance with the [K-12 Guidance for Education published by the California Department of Public Health \(August 2, 2021\)](#) and the [Cal/OSHA Statewide Industry Guidance](#). This is a living document and will be adapted and changed throughout the school year with input from the Tuolumne County Public Health Department, [California Department of Public Health](#) and [Cal/OSHA](#).

Family and Staff input can be provided at

[https://docs.google.com/forms/d/e/1FAIpQLSe0tCIKxhgkvAPx\\_qibOfNtWhq4TxLpxESVjxMH7AZuCXpsQ/viewform?usp=sf\\_link](https://docs.google.com/forms/d/e/1FAIpQLSe0tCIKxhgkvAPx_qibOfNtWhq4TxLpxESVjxMH7AZuCXpsQ/viewform?usp=sf_link)



This plan will be posted on the TCSOS website, sent via the school message notification system, and presented at the September 2021 Board of Education meeting.

## **Safe Return to In-Person Learning and Continuity of Services Plan**

In their July 2021 guidance, the [Centers for Disease Control and Prevention \(CDC\)](#) and the [California Department of Public Health \(CDPH\)](#) stress the importance of offering in-person learning. In-person instruction can occur safely when prevention strategies are implemented. TCSOS has a robust set of safety measures already in place and will comply with the State's public health requirements for schools as we have done from the beginning of the pandemic. We continue to work closely with the [Tuolumne County Public Health Department](#) (TCPH). The TCSOS has amended its previous COVID Safety Plan to present information for students, parents, and community members in this Section I on (A) key prevention strategies and (B) strategies to ensure continuity of services. Section II: COVID Prevention Program (CPP) and Appendix contains more detailed information.

For the 2021-22 school year, the TCSOS has updated and will implement the following key prevention strategies, based on the CDC, CDPH, and Cal/OSHA guidance for COVID-19.

2021-2022	Summary
<i>Schedule and Calendar</i>	Schedules will be provided by school program administrators and calendars can be found at <a href="https://www.tcsos.us/county-schools-calendar/">https://www.tcsos.us/county-schools-calendar/</a> All parts of the school environment will be open and students will mainstream per IEPs.
<i>Cohorts, hygiene practices</i>	Students will not be required to cohort this year; however, steps will be taken to ensure contact tracing is able to be completed when necessary. Frequent hand washing and cleaning will be expected.
<i>Daily Screening</i>	Families will screen their students using the questionnaire provided but do not need to turn in the forms. Staff are required to screen in daily using the <a href="#">app</a> .
<i>Masks and face coverings</i>	CDPH requirements: students and staff will mask indoors with outdoor masking not required.
<i>Testing</i>	Staff who have not provided a proof of vaccination will be required to test weekly per Executive Order. This year, students will be provided the option to test through TCSOS at no cost. More details to follow.
<i>Transportation</i>	All bus routes are in place and Sonora High School is prepared to offer transportation to/from school. Masking is required on buses.
<i>Food services</i>	This year, all students are provided meals at no cost.
<i>Independent Study</i>	Per AB 130, Independent Study is offered to all parents who request it dependent upon an IEP placement (if applicable). Call your program supervisor for more information.

The entire plan can be found at [www.tcsos.us](http://www.tcsos.us)

Family input can be provided at

[https://docs.google.com/forms/d/e/1FAIpQLSe0tCIKxhgkvAPx\\_qiibOfNtWhq4TxLpxESVjxMH7AZuCXpsQ/viewform?usp=sf\\_link](https://docs.google.com/forms/d/e/1FAIpQLSe0tCIKxhgkvAPx_qiibOfNtWhq4TxLpxESVjxMH7AZuCXpsQ/viewform?usp=sf_link)

## **Key Prevention Strategies**

### **1. Promoting Vaccination**

Vaccination is currently the leading public health prevention strategy to end the COVID-19 pandemic. Promoting vaccination, throughout the community and for all who are eligible, can help schools safely return to in-person learning by reducing transmission risk. TCSOS teachers, administrators, and staff were among the first in the state to get vaccinated through drive through clinics in partnership with the Tuolumne County Public Health Department.

As per Governor Gavin Newsom's new public health order, all school staff will be required to either show proof of full vaccination or be tested at least once per week for COVID-19. The new policy for school staff will take effect on August 12, 2021, and schools must be in full compliance by October 15, 2021.

#### **Employees:**

- The State's new public health order applies immediately to all TCSOS employees and TCSOS-contracted employees.
- Employees have two options: show proof of full vaccination or be tested every week.
- Procedures for showing proof will be sent to employees by Human Resources.
- Employees can get the vaccine through Tuolumne County Public Health. To make an appointment, please contact the clinic at 209-533-7440.

#### **Students:**

- TCPH strongly encourages students ages 12 and older to get the vaccine as soon as possible. TCPH offer opportunities for vaccination. The state has not required the COVID-19 vaccine for students.
- Individuals ages 12 years and older are currently eligible to obtain a vaccine that protects against COVID-19. Individuals may sign up at [MyTurn.ca.gov](https://myturn.ca.gov) or call the CA COVID-19 Hotline 1-833-422-4255.

As children under the age of 12 are not yet eligible for vaccination at this time, our amended guidance emphasizes implementing layered prevention strategies (e.g., using multiple prevention strategies together consistently) to protect people who are not fully vaccinated, including students, teachers, staff, and other members of their households.

### **2. Use of Face Masks**

Masks are one of the most effective and simplest safety mitigation layers to prevent in-school transmission of COVID-19 infections and to support full time in-person instruction in preschool settings and K-12 schools. SARS-CoV-2, the virus that causes COVID-19, is transmitted primarily by aerosols (airborne transmission), and less frequently by droplets. Physical distancing is generally used to reduce only droplet transmission, whereas masks are one of the most effective measures for source control of both aerosols and droplets. Therefore, masks best promote both safety and in-person learning by reducing the need for physical distancing (CDPH).

- **Required:** Preschool children above 2 years old and K-12 students are required to mask indoors, regardless of vaccination status, with exemptions per [CDPH face mask guidance](#). Persons exempted from wearing a face covering due to a medical condition, must wear a non-restrictive alternative, such as a face shield with a drape on the bottom edge, as long as their condition permits it and with a medical exemption on record from a medical provider.
- **Required:** Adults in school and childcare settings are required to mask when sharing indoor spaces with students.
- **Required:** All students and adults are required to wear masks on buses
- **Recommended** for adults dropping off or picking up children
- **Optional** for employees: when alone in a room or private office

**When outdoors:**

Based on CDPH recommendation: TCSOS is requiring that masks be worn during outdoor school events/activities when safe distances cannot be maintained at all times such as sitting close together in an outdoor amphitheater. Otherwise, students may be unmasked when outdoors.

**Exemptions and accommodations:**

Masks should NOT be worn by children under age 2 or anyone who has trouble breathing. Please see the section on **Considerations for Students with Disabilities** for exemptions and accommodations for students with disabilities and employees who work with them.

In limited situations where a face covering cannot be used for pedagogical or developmental reasons, (e.g., communicating or assisting young children or those with special needs) a face shield with a drape (per CDPH guidelines) can be used instead of a face covering while in the classroom as long as the wearer maintains physical distance from others. Staff must return to wearing a face covering outside of the classroom.

For students who are not exempt from wearing a face covering per the CDPH Face Coverings Guidance for childcare and K-12 settings, the following enforcement process will apply:

- Students will be redirected by staff any time a mask is not worn, or not worn properly, while indoors on school property.
- Students refusing to wear a mask after being redirected by a staff member to do so, or after being provided a mask by a staff member. A staff member will meet with the student and emphasize proper mask wearing requirements.
- If a student continues to not follow redirection after meeting with school staff, a meeting with parent and student will be scheduled immediately.
- Students continuing to refuse to wear a mask after the parent conference will have the following options - Option 1: Go through the Mask Exemption Process if applicable, or Option 2: Enroll in the district’s Independent Study program option.

All decisions shall be made in consideration of the child’s age, developmental journey, and other sensitivities. TCSOS is committed to keeping students in class and will work with families to ensure developmentally appropriate decisions are implemented regarding masks and face coverings. A variety of face coverings are provided at no charge to all students and staff.

Certain students with mental health or medical conditions, and disabilities may be exempt from the mask requirement. The process is described below:

- Parents request the *Student Face Covering Exemption Request Form* from the program administrator in order to begin the process for mask exemption.
- Parent takes form to student's licensed physician to complete.
- Per CDPH guidance on August 6, 2021, a licensed physician must provide authorization in order for a student to have an approved mask exemption.
- Until the request form process is fully approved and completed, students attending in person learning will be required to wear a face covering, or parents have the option to have their child(ren) attend the Independent Study program option while going through the mask exemption process.

The Mask Exemption Process will be as follows:

- Once a parent provides a completed *Student Mask Exemption Request Form* to a licensed physician, the parent will bring the form to program administrator for processing. Exemption exists if a licensed physician determines one of the following is met:
  - The student has a medical condition
  - The student has a mental health condition
  - The student has a communication disability
  - The student's learning is inhibited because they are hearing impaired
- If the student is found to be exempt from wearing a face covering, it will be determined if an alternative face covering (such as a face shield with a drape) can be used by the student.
- Once the process has been completed, the approved COVID-19 Student Mask Exemption Form will be provided to the teacher(s) of record for the student and the school administrator for that student.

Employees should refer to the section on **Required Use of Face Masks**

### **3. Physical Distancing When Possible and Cohorting**

#### **Physical Distancing**

Recent evidence indicates that in-person instruction can occur safely without minimum physical distancing requirements when other mitigation strategies (e.g., masking) are implemented. This is consistent with CDC K-12 School Guidance. Per CDPH, due to the obstacles it would present to California schools' full reopening, physical distancing is recommended when possible but not required at this time.

#### **Cohorting**

- It is recommended to have a group with fixed membership that stays together without mixing with any other groups for activities.
- There is no limit on size or number of students per cohort
- Teachers and staff can work with multiple groups and classrooms without a maximum limit.

### **School Meals**

With the new school year starting, the cafeteria at each site will be reopening to provide students meals. Staff will continue to wear masks and practice all safety standards in the preparation and serving of the meals.

### **Water**

Students are encouraged to bring their own water bottles to refill at indoor water fountains.

### **On School Buses**

- Students and drivers will be required to wear face masks.
- The students will sit one to a seat unless they are family members from the same house.
- Students will practice physical distancing to the best extent possible.
- Parents will be asked to screen their own children (students), so that they can call the transportation office to cancel transportation if the student has a fever. Students should be self-screened by parents in the morning using the screening guide below. This year, students are not required to turn in the screening form.
- Vehicles will be cleaned and disinfected often.

## **4. Health Screening**

### **Staying Home When Sick and Getting Tested**

Students, teachers, and staff who have symptoms of infectious illness, such as influenza (flu) or COVID-19, should stay home and be referred to their healthcare provider for testing and care. Staying home when sick with COVID-19 is essential to keep COVID-19 infections out of schools and prevent spread to others. It also is essential for people who are not fully vaccinated to quarantine after a recent exposure to someone with COVID-19.

- Before leaving home all students (or their parents) must conduct a self-check or **passive screening**.
- All staff must submit answers to the electronic self-screening tool. This is known as **active screening**.

Ask these questions:

- Do I have a fever?
- Do I have a cough?
- Am I experiencing shortness of breath or difficulty breathing?
- Am I experiencing any other symptoms?
- Have I been in contact with someone who has tested positive for COVID-19 in the last 14 days?
- In the last two weeks, have I been directed to quarantine, isolate or take a COVID-19 test?

If you respond "yes" to any of the questions, you must stay home and it is recommended that you contact your primary care physician for further medical advice. If you have a fever with cough or shortness of breath, you are urged to contact your primary care physician as these symptoms may

be attributed to COVID-19. To protect others, stay home, wear a facemask when you seek medical care.

If the students, employees, or parents have symptoms of COVID-19 infection, they are not allowed to return to campus until they have met the CDPH criteria to return to school:

- i. At least 24 hours have passed since resolution of fever without the use of fever-reducing medications; and
- ii. Other symptoms have improved; and
- iii. They have a negative test for SARS-CoV-2, OR a healthcare provider has provided documentation that the symptoms are typical of their underlying chronic condition (e.g., allergies or asthma) OR a healthcare provider has confirmed an alternative named diagnosis (e.g., Streptococcal pharyngitis, Coxsackie virus), OR at least 10 days have passed since symptom onset.

*See the flow chart for more information at the end of this document.*

## **5. Screening & Diagnostic Testing**

TCSOS will provide opportunities for COVID-19 testing to reduce the risk of transmission and to prevent outbreaks. TCSOS is strengthening its already robust testing program as follows:

- Per the August 12 new public health order, effective immediately all unvaccinated employees must take a weekly COVID-19 test. Tests will be available at several locations.
- Students will be offered a COVID-19 PCR test (with informed parents/guardian consent) through the TCSOS testing program. Antigen (Binax) rapid test are available to all TCSOS students upon request from a parent/guardian.
- Student-athletes will follow the guidance to be released from the CDPH.

TCSOS will continue to:

- Provide access to testing for all individuals who are exposed to a COVID-19 case, and in the case of multiple infections or a major outbreak within the school as the basis for
- further control measures either through the TCSOS testing resources or through the state testing facility.
- Offer testing to employees who are vaccinated but wish to test on a regular basis.

## **6. Handwashing and Respiratory Etiquette**

- All students, employees and campus visitors are asked to follow these safety guidelines:
- Wash hands frequently for 20 seconds with soap and water — especially before and after eating, after coughing or sneezing, after sharing items in class and before and after using the restroom.
- Avoid touching your face.
- Cover coughs and sneezes with a tissue or elbow.
- Use tissues to wipe your nose.

School sites will have hand washing stations or hand sanitizer available at designated locations to allow for frequent hand washing. For informational video on handwashing, please see [How to Wash Your Hands](#)

**7. Contact tracing, in combination with isolation and quarantine**

- TCSOS notifies its local health officer of any known case of COVID-19 among any student or employee who was present on a K-12 public school campus within the 10 days preceding a positive test for COVID-19.
- If an individual tests positive for COVID-19, isolation is required (staying at home away from and separate from others).
- If you are unvaccinated and have been in close contact with a person diagnosed with COVID-19, you are required to quarantine (stay home and separate yourself from others) for 10 days, monitor your health for 14 days following exposure, and follow the Health Officer Quarantine Order.
- If you are asymptomatic and fully vaccinated and have been identified as a close contact, you are recommended to test for COVID-19 three to five days after the exposure but are not required to quarantine. Fully vaccinated is defined as 2 weeks have passed since a single dose vaccine or since your second dose in a 2-dose vaccine series.
- It is recommended that you still get tested if you have come into close contact with a person with COVID-19 even if you are vaccinated and/or if you have recovered from laboratory confirmed COVID-19 in the past 3 months (90 days). This means you had a positive COVID-19 viral test (swab or saliva) test and you completed isolation.

**HEALTH PROTOCOLS AND COMMUNICATIONS**

**Presenting Symptoms While on Campus**

If an employee or student becomes ill on campus/district/office, he/she will immediately report to the site’s dedicated health/isolation room and an incident/case form will be completed by a school nurse or response team designee.

Once the employee or student arrives at the health/isolation room, immediately provide them with a mask if they do not have one. Explain that this is to help protect other employees and students and prevent the spread of the potential virus.

The nurse/staff member must complete the HANDOUT: Suspected COVID19 Incident/Case Form and either direct the symptomatic individual to leave work or call a parent/family member to transport home. The nurse/staff member will determine if emergency services is to be called based on symptoms.

The nurse or designee and others attending to the symptomatic person, should

Tuolumne County Office of Education  
Health Services  
COVID SYMPTOM FORM

Date \_\_\_\_\_ School \_\_\_\_\_ Teacher \_\_\_\_\_

Dear Parent of : \_\_\_\_\_ (Student Name) Indicated they experienced the following symptoms:  
\_\_\_\_\_ (Exact Area) by \_\_\_\_\_ (Describe symptom, etc.)  
at \_\_\_\_\_ AM/PM today.

Since symptoms can continue, continue to observe your child for the next 24 hours.  
**IF ANY OF THE FOLLOWING OCCUR, CALL YOUR FAMILY PHYSICIAN AT ONCE:**

1. Headache	7. Fever
2. Persistent vomiting, nausea	8. Shortness of breath/difficulty breathing
3. Cough	9. Diarrhea
4. Loss of taste, smell	10. Headache
5. Nasal Congestion	11. Chills/muscle aches
6. Sore Throat	

Parent notified Time \_\_\_\_\_

REMARKS (including treatment):  
\_\_\_\_\_

Parent - White Copy  
School Nurse - Yellow Copy

\_\_\_\_\_  
(Person Providing Care)



also wear personal protective equipment (PPE) while working with the person displaying symptoms including N95 mask or higher and gloves. A gown, goggles, and/or face shield may also be necessary depending on the circumstances. These supplies will be stored and accessible for such urgent situations.

The nurse and site supervisor must identify persons who may have come in close contact with the person displaying symptoms. Unless required by the local health authority, confidentiality will be maintained as directed by State/Federal HIPAA and FERPA compliance laws.

The school nurse or designee will assess the risk of exposure to COVID-19 and advise individuals identified as a close contact (any individual within 6 feet for at least 15 minutes) that they may have been in contact with an individual that has been diagnosed with or is likely to have COVID-19 and should follow current guidelines per order of the Tuolumne County Public Health Officer.

Following CA Public Health Department guidelines, the contaminated area(s)

- Area will sit idle for 24 hours
- Appropriate PPE equipment shall be utilized by cleaning staff

### **Guidance for Known Exposure**

While we all hope to avoid exposure to illness from COVID-19, we need to be prepared for that possibility. If you or someone you have been in contact with has been exposed to the virus, our first concern is for your health and safety and those around you. In this rapidly changing situation, healthcare providers should have the most up-to-date information from the CDC.

### **Reported Case of Covid-19 Within Schools / Offices**

If a confirmed case of COVID-19 has been self-reported from an individual within a school/district office community, the Human Resources/Site administrator will work to identify any close contacts (any individual within 6 feet of an infected person for at least 15 minutes) of the confirmed/likely case and assess the risk of exposure. A notice will be sent via email or phone informing close contacts of the known exposure. The notice will disclose as much information as possible relating to the best indicated date and location of exposure. TCSOS will maintain confidentiality as required under HIPAA and FERPA and state law related to privacy of educational records. All absences due to illness by students or staff will be monitored and collated using systems already established: Aesop (staff) and Aeries (students).

Staff will report a positive case of COVID immediately to the HR Director, direct supervisor, and the school nurse/LVN assigned to monitoring.

### **8. Cleaning and Sanitation**

Intensified cleaning procedures have been put into effect at all schools and work locations, with regular cleaning schedules established at each site. If a facility has had a sick person with COVID-19 within the last 24 hours, cleaning AND disinfection of the spaces occupied by that person will take place during that time.

## **9. Ventilation**

Ventilation will be optimized through maintenance plans at all school sites and monitored for efficiency. For indoor spaces, ventilation should be optimized, which can be done by following CDPH Guidance on [Ventilation of Indoor Environments and Ventilation and Filtration to Reduce Long-Range Airborne Transmission of COVID-19 and Other Respiratory Infections: Considerations for Reopened Schools.](#)

## **10. Visitors, Volunteers, and Meetings**

- At this time, visitors and volunteers to school campuses will be limited to those providing essential direct services.
- All visitors, volunteers and external groups or organizations must use a face mask, sign in before entry, and screen for symptoms.
- Meetings are limited

## **11. Considerations for Students with Disabilities**

1. Any alternatives to face coverings should be discussed by the student's IEP team and documented in the IEP. For example, if a student has behavioral, sensory intolerance to the health mandated use of personal protective equipment (PPE), use a face shield or alternative covering to help assist in maintaining health safety. A medical exemption from a medical provider must be on file.
2. Teachers of students who are deaf/hard of hearing will use a face shield and/or a clear mask for instruction.
3. School personnel will work closely with families of students who have health conditions that put their child at increased risk of severe illness from COVID-19. As appropriate, a health and safety plan may be developed.

## **Considerations for Employees Working with Students with Disabilities**

Services will be conducted in-person. If community transmission rates for COVID-19 are high, services for students with disabilities and their families may be conducted with staff remotely as per TCPH guidance.

1. Employees will use the type of face covering that is most conducive to addressing specific students' needs.
2. IEP services, to the extent possible, will be delivered with adherence to the wearing of facial coverings, and increased hand washing and sanitizing.
3. All employees who work with students who require more hands-on services such as diapering, catheterization, feeding, etc. will use face coverings and gloves. Employees who work with students who require modeling of oral tasks to complete work will be issued face shields with drapes so students are able to view their instructor.

## Continuity of Services Plan

The TCSOS is committed to ensuring continuity of services when students and their families are impacted by exposure to COVID-19 and other barriers to learning. This includes but is not limited to services to address students' academic needs and students' and staff social, emotional, mental health and other needs, which may include student health and food services and which take into consideration the needs of students with disabilities and English learners.

### **1. Exposure Management and Temporary Class or School Closure**

Closure will be done in consultation with the Tuolumne County Health Department (TCPH), which is our local health department (LHD). In cases where isolation, quarantine, classroom or school closures are required, the TCSOS will provide for the continuity of learning, meals and other supportive services for students and families as follows.

### **2. Continuity of Services**

For Individual Students in Quarantine or Self-Isolation

- In cases where student, family member, school nurse, health clerk and/or School Covid-19 Compliance Team identifies need for an individual student to isolate or quarantine due to Covid-19 exposure or testing positive, the following steps are planned:
  - A designated staff will manage services for quarantined students and will provide information to student and family on quarantine or isolation procedures; access to food, health, mental health and social services; and instructions for accessing instructional services, Chromebook, or WIFI connectivity as needed.
  - School Nurse or LVN will provide supports and check in regarding student's health
  - Food Services will provide meals for student
  - Student and family will be connected to mental health and social services
  - Considerations for English Learners: If a student is required to quarantine, the TCSOS office will collaborate with the teacher to tailor support based on the assignments. Students in quarantine will be invited to virtual tutoring and English Language Development sessions.
  - Considerations for Students with Disabilities: in the event the student must be medically quarantined or isolated, case managers will contact family to discuss virtual service delivery and coordinate with service providers.

### **Classroom Exposure or School Closure**

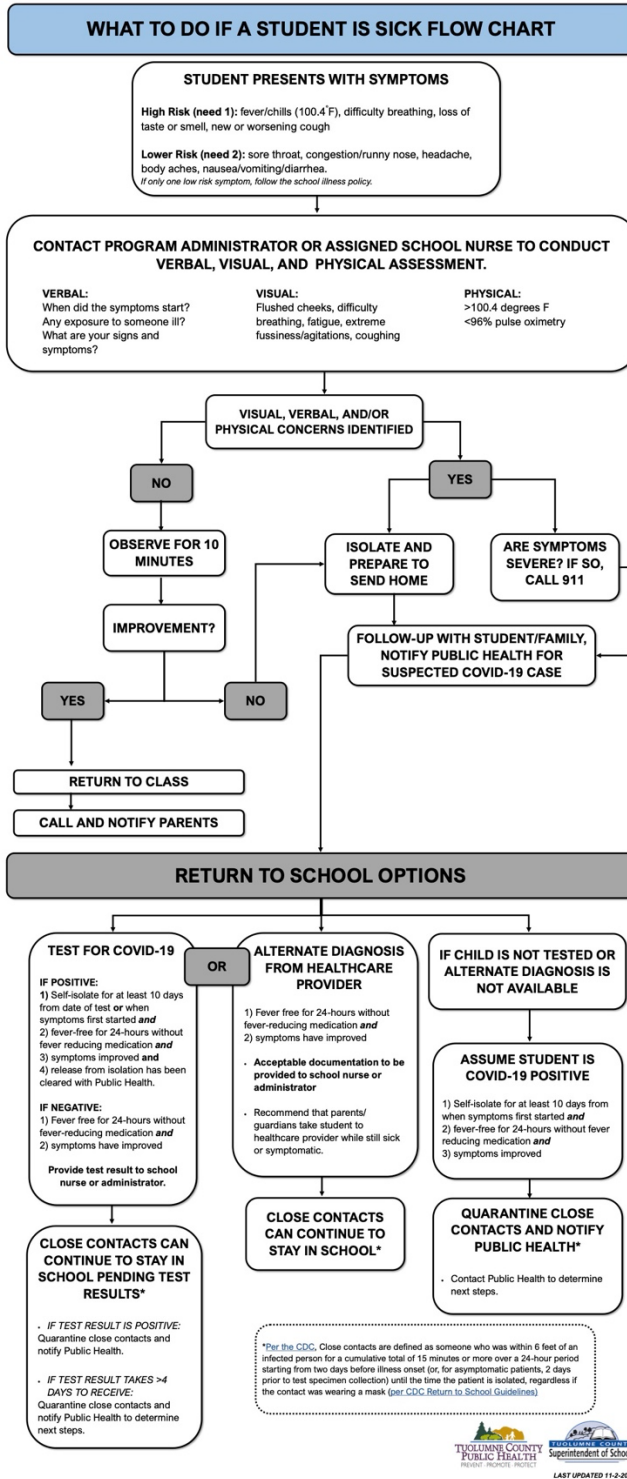
- In cases where an entire class has close contact exposure to a positive COVID-19 case, students will quarantine at home and classes will be conducted virtually by teacher or by substitute teacher.
- Determination of need for classroom or school closure will be done in consultation with TCPH. If an entire class has exposure to a positive COVID-19 case, students will quarantine at home.
- If a determination includes school closure, a temporary "distance learning" mode will be activated for the school site using the independent study protocols adopted by the state.

## Cal/OSHA Regulations for K-12 School Settings

- Workplace safety practices are governed by Cal/OSHA. The following regulations adopted by CalOSHA on June 17, 2021 are specific to K-12 school settings, and were effective immediately:
- Any employees, working directly in contact with students and while students are present, must continue to wear face coverings at all times indoors while students are present, regardless of vaccination status.
- There are no face covering requirements outdoors regardless of vaccination status for adults and students (except in the event of a major workplace COVID-19 outbreak).
- All requirements for physical distancing and barriers have been removed, regardless of employee vaccination status (except in the event of a workplace COVID-19 outbreak).
- Fully vaccinated employees (2 weeks after your last COVID-19 vaccine) who are not working directly in contact with students, where no students are present, in a group less than 9 other employees, and not in public/high-use areas or in shared office spaces can choose to not wear face coverings while indoors at work. If an employee has been vaccinated against COVID-19 and wishes to remove their face covering, the TCSOS is required to document the employee's COVID-19 vaccination status. Contact the Human Resources Office if you did not receive the vaccination verification form to complete. This directive can be changed upon circumstances of community transmission.
- Employers must provide face coverings to any employee who requests one, regardless of vaccination status.
- Employers must provide unvaccinated employees with approved respirators, such as N-95 for voluntary use when working indoors or in a vehicle with others, upon request.
- The definition of a sufficient face covering at work now includes only a medical, surgical, or two-fabric layer mask, or N-95 respirator. Please refer to the CDPH "Get the Most Out of Masking" document.  
<https://www.cdph.ca.gov/Programs/CID/DCDC/Pages/COVID-19/Get-the-Most-out-of-Masking.aspx#>
- Employees who are not fully vaccinated, or who decline to verify vaccine status, are required to continue to wear approved face coverings at work indoors, except when briefly eating or drinking or alone in a room that is not high-use/available to the public or vehicle.
- Employers must notify employees of the benefits of the COVID-19 vaccine, including that the vaccine has been effective at preventing serious illness or death. COVID-19 Vaccine and the benefits of the vaccine: [https://www.cdc.gov/coronavirus/2019-ncov/vaccines/vaccine-benefits.html?s\\_cid=10465:benefits%20of%20covid%2019%20vaccine:sem.ga:p:RG:GM:gen:PTN:FY21](https://www.cdc.gov/coronavirus/2019-ncov/vaccines/vaccine-benefits.html?s_cid=10465:benefits%20of%20covid%2019%20vaccine:sem.ga:p:RG:GM:gen:PTN:FY21)
- All visitors to any indoor TCSOS facility must wear face coverings while inside those facilities if they are not fully vaccinated against COVID-19, unless they meet one of the following:
  - They are under 2 years of age.
  - They have a medical condition, mental condition, or disability that prevents wearing a face covering documented by a medical provider.

- They are hearing impaired or actively communicating with a person who is hearing impaired where the ability to see the mouth is essential for communication.
- Employers must evaluate whether it is necessary to implement physical distancing and barriers during an outbreak (3 or more cases in an exposed group of employees).
- Employers must implement physical distancing and barriers during a major outbreak (20 or more cases in an exposed group of employees).
- Employers must evaluate ventilation systems to maximize outdoor air and increase filtrations efficiency, and evaluate the use of additional air cleaning systems
- For additional information on the revised CalOSHA regulations for the workplace, visit
- <https://www.dir.ca.gov/dosh/coronavirus/Revisions-FAQ.html>

# Attachments



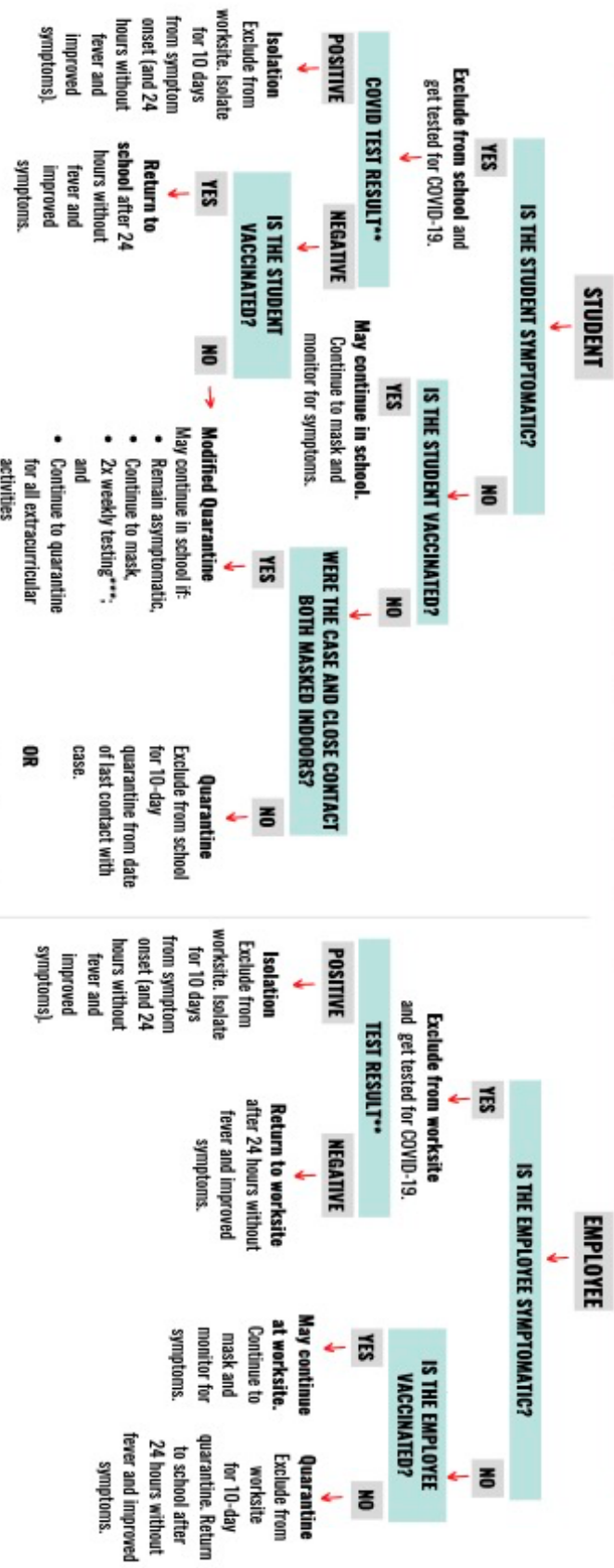


# CLOSE CONTACT QUARANTINE FLOW CHART FOR INDOOR CLASSROOM SETTINGS

2021-2022 COVID-19 PUBLIC HEALTH GUIDANCE FOR K-12 SCHOOLS IN CALIFORNIA

**1** **IMPORTANT:** All close contact information (including masking information) should be sent to public health in SPOT or email. Quarantine instructions will be provided to by public health during contact tracing.

## IS THE CLOSE CONTACT\* A STUDENT OR EMPLOYEE?



Quarantine can end after Day 7, if test (after day 5) is negative.\*\*

\*Close contact is defined as within 6 feet for more than 15 minutes over a 24-hour period.

\*\*Recommend PCR, antigen testing if PCR is not accessible

\*\*\* 2x weekly testing can be antigen test

**SYMPTOMS: High Risk** (need 1): fever/chills (100.4°F), difficulty breathing, loss of taste or smell, new or worsening cough. **Lower Risk** (need 2): sore throat, congestion/runny nose, headache, body aches, nausea/vomiting/diarrhea. If only one low risk symptom, follow school illness policy.



LAST REVISED: 7-30-2021